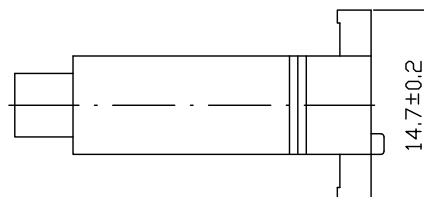
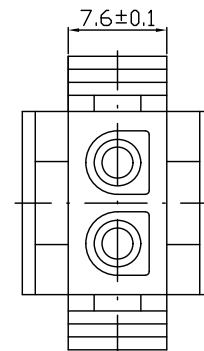
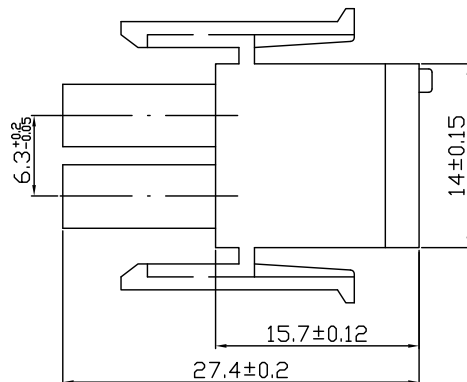
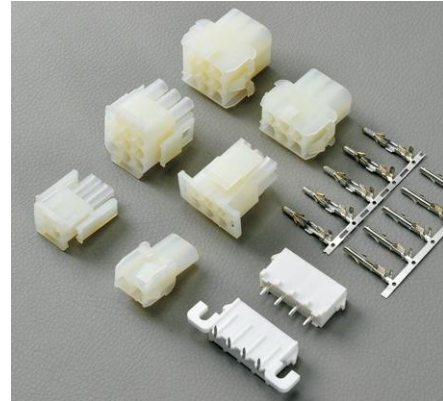


Wire To Board Connectors

KLS1-XL1-6.35 (6.35mm Molex 42021 Wire To Board Connector)

Specifications:

- 1、Poles: 2 to 6/10P 2x2to2x3p 2x3to5x3p
- 2、Current rating: 10~8A AC,DC
- 3、Voltage rating: 300V AC,DC
- 4、Temperature range: -25℃ ~ +85℃
- 5、Contact resistance: $\leq 20\text{m}\Omega$
- 6、Insulation resistance: $\geq 1000\text{M}\Omega$
- 7、Withstand voltage: 1500V AC/minute
- 8、Applicable wire: AWG #20 to #14
- 9、Applicable PC board thickness: 1.6mm



ORDER INFORMATION

Product NO.: KLS1-XL1-6.35 -XX-FH

Series No. _____ Female housing
Pitch: 6.35 mm _____ Number of Pins

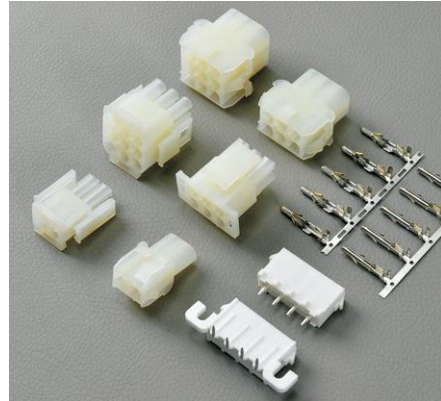
Connectors

Wire To Board Connectors

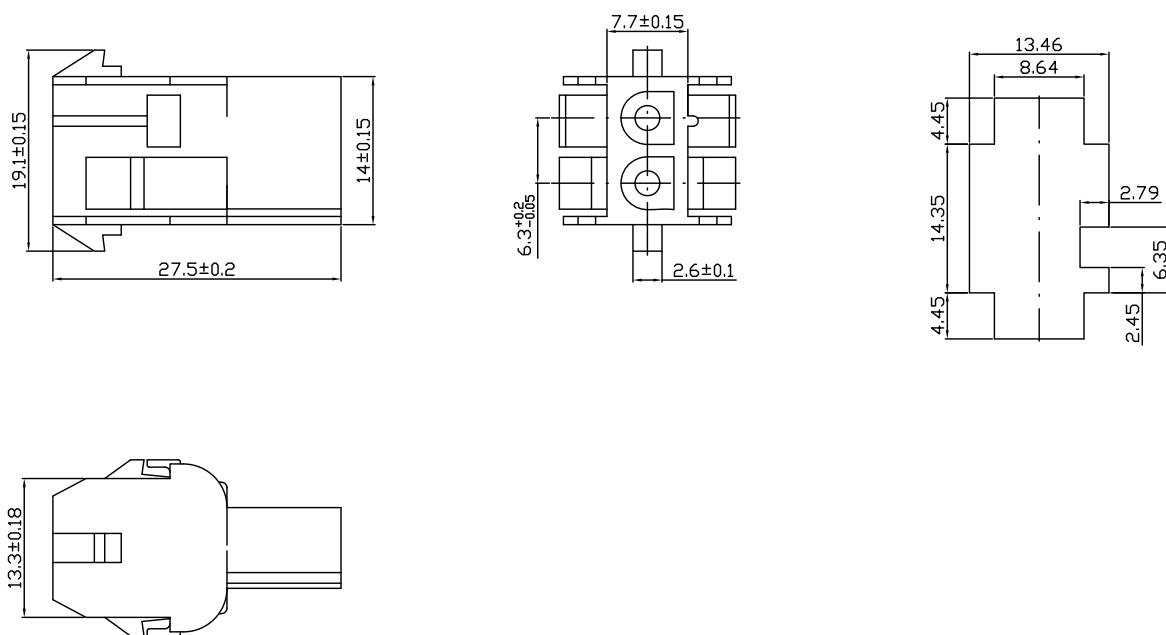
KLS1-XL1-6.35 (6.35mm Molex 42021 Wire To Board Connector)

Specifications:

- 1、Poles: 2 to 6/10P 2x2to2x3p 2x3to5x3p
- 2、Current rating: 10~8A AC,DC
- 3、Voltage rating: 300V AC,DC
- 4、Temperature range: -25℃ ~ +85℃
- 5、Contact resistance: $\leq 20\text{m}\Omega$
- 6、Insulation resistance: $\geq 1000\text{M}\Omega$
- 7、Withstand voltage: 1500V AC/minute
- 8、Applicable wire: AWG #20 to #14
- 9、Applicable PC board thickness: 1.6mm



I



ORDER INFORMATION

Product NO.: KLS1-XL1-6.35 -XX-MH

Series No. _____ Male housing
Pitch: 6.35 mm _____ Number of Pins

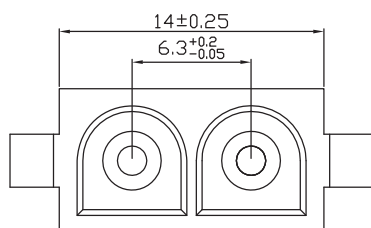
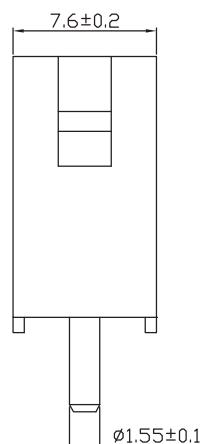
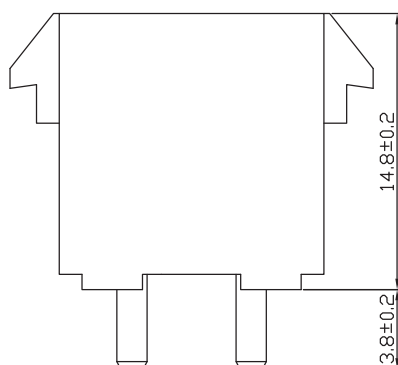
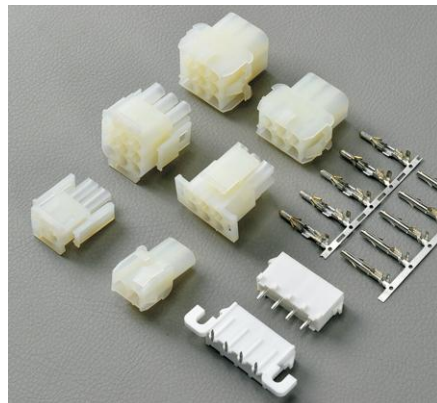
Connectors

Wire To Board Connectors

KLS1-XL1-6.35 (6.35mm Molex 42021 Wire To Board Connector)

Specifications:

- 1、Poles: 2 to 6/10P 2x2to2x3p 2x3to5x3p
- 2、Current rating: 10~8A AC,DC
- 3、Voltage rating: 300V AC,DC
- 4、Temperature range: -25℃ ~ +85℃
- 5、Contact resistance: $\leq 20\text{m}\Omega$
- 6、Insulation resistance: $\geq 1000\text{M}\Omega$
- 7、Withstand voltage: 1500V AC/minute
- 8、Applicable wire: AWG #20 to #14
- 9、Applicable PC board thickness: 1.6mm



ORDER INFORMATION

Product NO.: KLS1-XL1-6.35 -XX-S

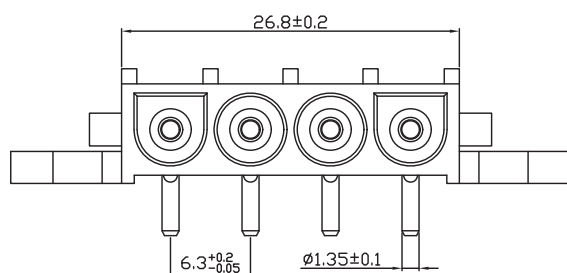
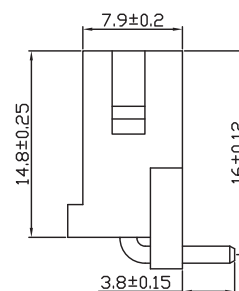
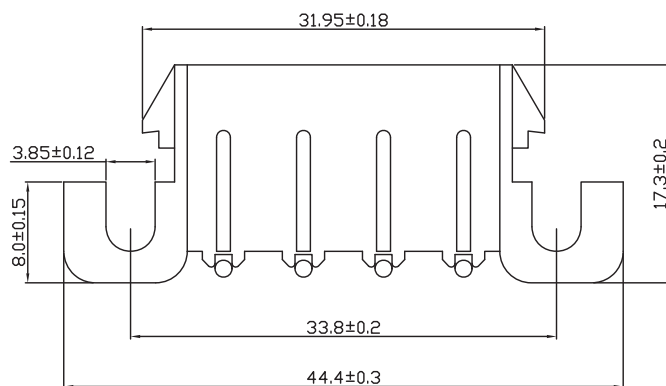
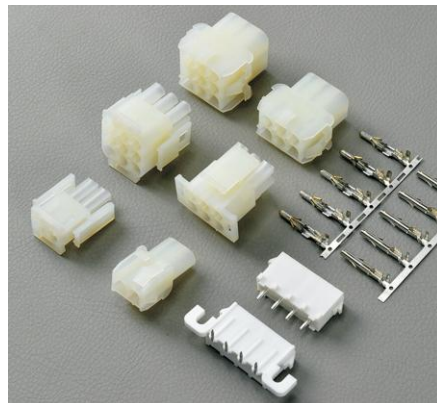
Series No. _____ Straight Pin
Pitch: 6.35 mm _____ Number of Pins

Wire To Board Connectors

KLS1-XL1-6.35 (6.35mm Molex 42021 Wire To Board Connector)

Specifications:

- 1、Poles: 2 to 6/10P 2x2to2x3p 2x3to5x3p
- 2、Current rating: 10~8A AC,DC
- 3、Voltage rating: 300V AC,DC
- 4、Temperature range: -25℃ ~ +85℃
- 5、Contact resistance: $\leq 20\text{m}\Omega$
- 6、Insulation resistance: $\geq 1000\text{M}\Omega$
- 7、Withstand voltage: 1500V AC/minute
- 8、Applicable wire: AWG #20 to #14
- 9、Applicable PC board thickness: 1.6mm



ORDER INFORMATION

Product NO.: KLS1-XL1-6.35 -XX-R

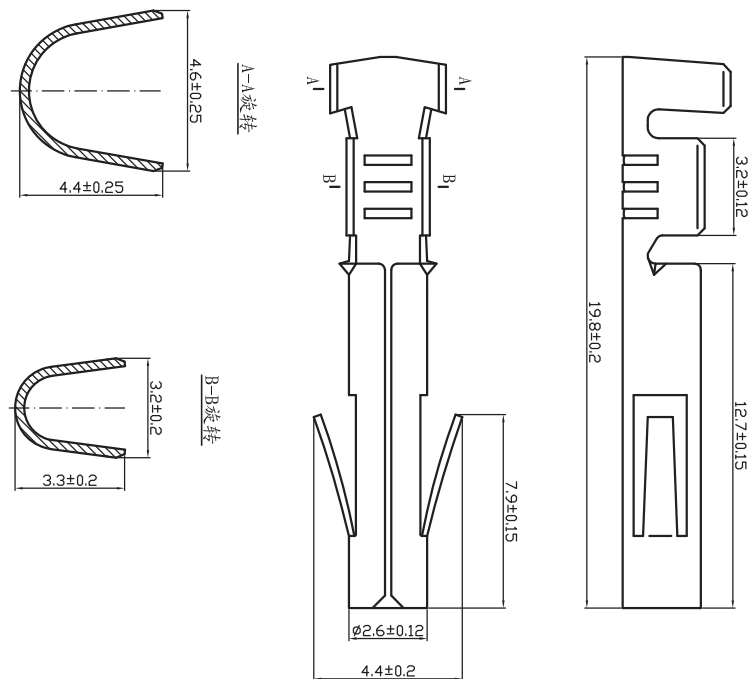
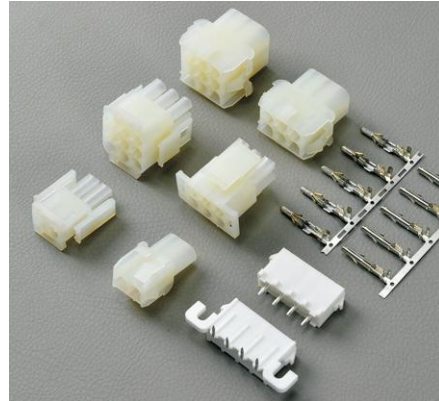
Series No. _____ Right Pin
Pitch: 6.35 mm _____ Number of Pins

Wire To Board Connectors

KLS1-XL1-6.35 (6.35mm Molex 42021 Wire To Board Connector)

Specifications:

- 1、Poles: 2 to 6/10P 2x2to2x3p 2x3to5x3p
- 2、Current rating: 10~8A AC,DC
- 3、Voltage rating: 300V AC,DC
- 4、Temperature range: -25℃ ~ +85℃
- 5、Contact resistance: $\leq 20\text{m}\Omega$
- 6、Insulation resistance: $\geq 1000\text{M}\Omega$
- 7、Withstand voltage: 1500V AC/minute
- 8、Applicable wire: AWG #20 to #14
- 9、Applicable PC board thickness: 1.6mm



ORDER INFORMATION

Product NO.: KLS1-XL1-6.35 -FT

Series No. _____
Pitch: 6.35 mm _____ Female terminal

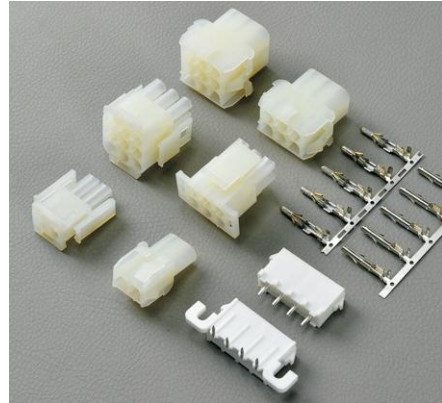
Connectors

Wire To Board Connectors

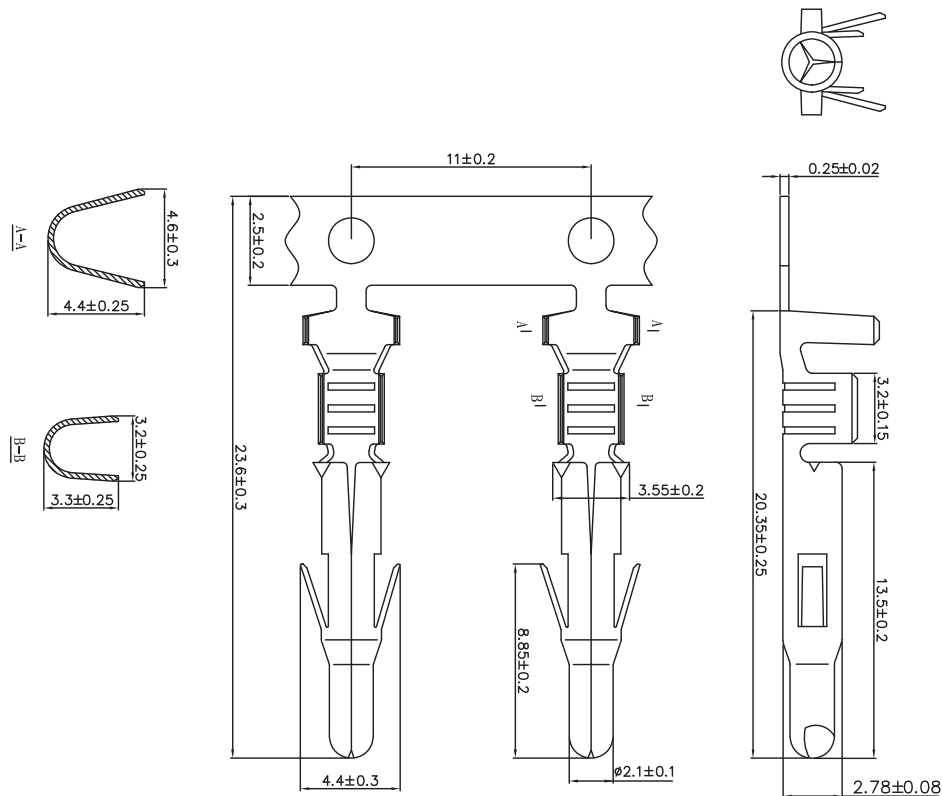
KLS1-XL1-6.35 (6.35mm Molex 42021 Wire To Board Connector)

Specifications:

- 1、Poles: 2 to 6/10P 2x2to2x3p 2x3to5x3p
- 2、Current rating: 10~8A AC,DC
- 3、Voltage rating: 300V AC,DC
- 4、Temperature range: -25℃ ~ +85℃
- 5、Contact resistance: $\leq 20\text{m}\Omega$
- 6、Insulation resistance: $\geq 1000\text{M}\Omega$
- 7、Withstand voltage: 1500V AC/minute
- 8、Applicable wire: AWG #20 to #14
- 9、Applicable PC board thickness: 1.6mm



I



ORDER INFORMATION

Product NO.: KLS1-XL1-6.35 -MT

Series No. _____
Pitch: 6.35 mm _____ Male terminal _____