

Customer: TRIATRON

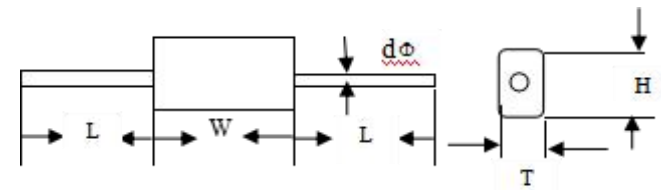
Customer: S P/N: 221769

JGS"S P/N: CL20A 206J250V TR

Capacitance 容量	@ 1KHZ 23°C±3°C	Tolerance 误差	±5%	Rated Voltage 额定电压	@ 25°C 50/60HZ
	20µF				250V
Dielectric 介质	Polyseter film	Plates 导体	Metallized film	Construction 结构	Winding
Dissipation Factor 损失角	@ 1K HZ 1Vrms 25°C max	50~60HZ	.....		
		1KHZ	1.00%		
		10KHZ	1.50%		
		150KHZ			
Test Voltage 测试电压	1.6 times of rated voltage for 5 seconds cut off current at 10mA	DC lead to lead	...400VDC		
		DC lead to case	.....VDC		
		AC lead to lead	.....VAC		
		AC lead to case	.....VAC		
Dielectric Withstanding Voltage 介质耐压强度	Between terminals 250V 200% 1To 5 sec max		500VDC		
Insulation Resistance 绝缘阻抗	20°C@ 100 VDC 60 seconds min	Lead to lead			
	20°C@.....VDC..... seconds min	Lead to case	.....MΩ		
dv/dt 单位时间电压变化率	max	Max pulse rise time	(v/sec)		
IpeakA 最大值电流	@70°C		Amps		
IrmsA 实效值电流	@70°C		.....Amps		
Surge/Pulse voltage 冲击电压	140% rated voltage max		VDC		
E.S.R 等效串联阻抗		Standard 依循标准			

### DRAWING & MARKING

Protection/Coating 外封装	Flame retardant epoxy resin (UL94V-0)
Resin filled 灌封	
Lead Wire 导线	Φ 0.8tinned steel wires
Colour 颜色	yellow



Safety approval 安规认证	Dimension(尺寸)mm			
	W(±0.5)	H(±0.5)	T(±0.5)	P
	46.0	23.8	14.3	
	dφ(±0.05)	L(±3.0)		
	0.8	38.0		

单位: mm

Remark 备注:	<div style="border: 2px solid black; padding: 5px; display: inline-block; color: red; font-weight: bold; font-size: 1.2em;">RoHS</div>	Confirmation area 客户承认签回区
---------------	--	------------------------------

Operating Temperature 工作温度范围 From Minus -40 °C to Plus +125°C		Designer 设计师 丁亚维	Design code 设计代码: CL20A 206J250V TR	
DATE 日期: 2025-02-10			Appoval 核准	Drawing NO.
3RD ANGLE PROJECTION 第三角法		Drawing 绘图员 陈晓玉		
SCALE	~			