



**SURFACE MOUNT SWITCHING RECTIFIER**

**BAV100 thru BAV103**

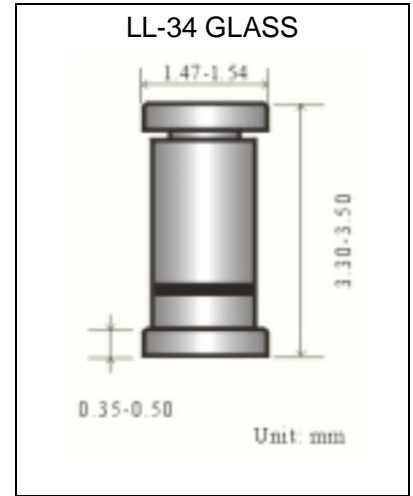
**REVERSE VOLTAGE**      50-200 Volts  
**WORKING CURRENT**      250 mAmpere

**FEATURES**

- Fast switching( $T_{rr}<50ns$ )
- Low Forward Voltage Drop
- Power Dissipation of 400mW
- High Stability Capacity

**MECHANICAL DATA**

- Case: LL-34 Glass
- Polarity: Color band denotes cathode end
- Terminals: Solder Plated



**MAXIMUM RATINGS AND ELECTRICAL CHARACTERISTICS**

- Ratings at 25°C ambient temperature unless otherwise specified

Parameter	Symbol	Value				Units
		BAV100	BAV101	BAV102	BAV103	
Reverse Voltage	$V_R$	50	100	150	200	V
Maximum Repetitive Reverse Voltage	$V_{RRM}$	60	120	200	250	V
Forward DC Current	$I_F$	250				mA
Average forward rectifier current	$I_{F(AV)}$	200				mA
Repetitive Peak Forward Current	$I_{FRM}$	625				mARe
Non-repetitive Peak Forward Surge Current	$I_{FSM}$	1.0				Amp
Power Dissipation	$P_D$	400				mW
Operating Junction Temperature Range	$T_J, T_{STG}$	-65 to 175				°C

<b>Electrical Characteristics</b> ( $T_A=25^\circ C$ unless otherwise noted)						
Parameter	Condition	Symbol	Min.	Typ.	MAX.	Units
Leakage Current	BAV100 $V_R=50V; T_J=25^\circ C$	$I_R$			100	nA
	BAV101 $V_R=100V; T_J=25^\circ C$					
	BAV102 $V_R=150V; T_J=25^\circ C$					
	BAV103 $V_R=200V; T_J=25^\circ C$					
Forward Voltage	$I_F=100mA$	$V_F$			1.00	V
	$I_F=200mA$					
Junction Capacitance	$V_R=0V, f=1.0MHz$	$C_J$			1.5	pF
Reverse Recovery Time	$I_F=30mA$ to $I_R=30mA$ $I_{rr}=3mA, R_L=100\Omega$	$T_{rr}$			50	nS



SURFACE MOUNT SWITCHING RECTIFIER

BAV100 thru BAV103

REVERSE VOLTAGE	50-200 Volts
WORKING CURRENT	250 mAmpere

Ratings and Characteristics Curves ( $T_A=25^\circ\text{C}$  unless otherwise noted)

