

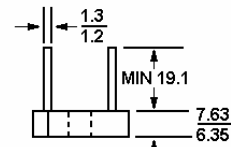
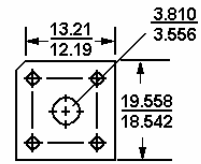
# BR10 THRU BR1010

## 10A SINGLE-PHASE SILICON BRIDGE RECTIFIERS

### Features

- Surge overload rating-200 amperes peak
- Low forward voltage drop
- Small size; simple installation
- Silver Plated Copper leads
- Mounting Position: Any
- Ceramic case

VOLTAGE RANGE  
50 to 1000 Volts PRV  
CURRENT  
10 Amperes



Polarity shown on side of case;  
positive lead by beveled corner.

Dimensions in mm

### Absolute Maximum Ratings and Characteristics

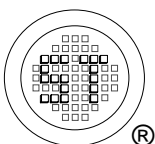
Rating at 25°C ambient temperature unless otherwise specified. For capacitive load, derate current by 20%.

	BR1005	BR101	BR102	BR104	BR106	BR108	BR1010	Units
Maximum Recurrent Peak Reverse Voltage	50	100	200	400	600	800	1000	V
Maximum RMS Voltage	35	70	140	280	420	560	700	V
Maximum Average Forward Rectified Output Current at	10 6 6							A
$T_C = 50^\circ\text{C}$								A
$T_C = 100^\circ\text{C}^*$ $T_A = 50^\circ\text{C}^{**}$								A
Peak Forward Surge Current, 8.3ms single half sine-wave superimposed on rated load	200							A
Maximum Forward Voltage Drop per element at 5A Peak	1.1							V
Maximum Reverse Current at Rated DC Blocking Voltage per element	10 1							uA mA
$T_A = 25^\circ\text{C}$ $T_A = 100^\circ\text{C}$								
Operating Temperature Range $T_C$	-55 to +125							$^\circ\text{C}$
Storage Temperature Range $T_A$	-55 to +125							$^\circ\text{C}$

Notes:

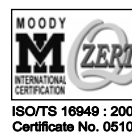
\* Unit mounted on metal chassis

\*\* Unit mounted on P.C. board



**SEMTECH ELECTRONICS LTD.**

(Subsidiary of Sino-Tech International Holdings Limited, a company listed on the Hong Kong Stock Exchange, Stock Code: 724)



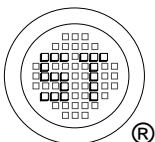
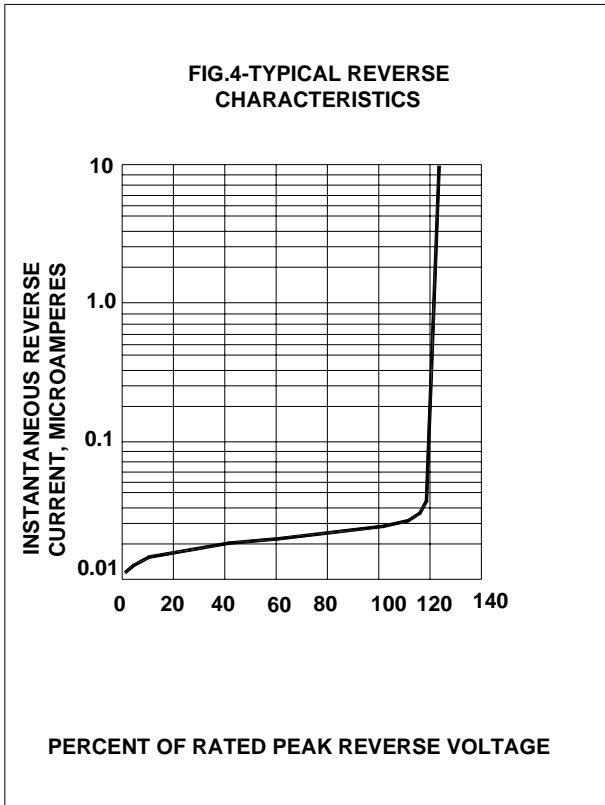
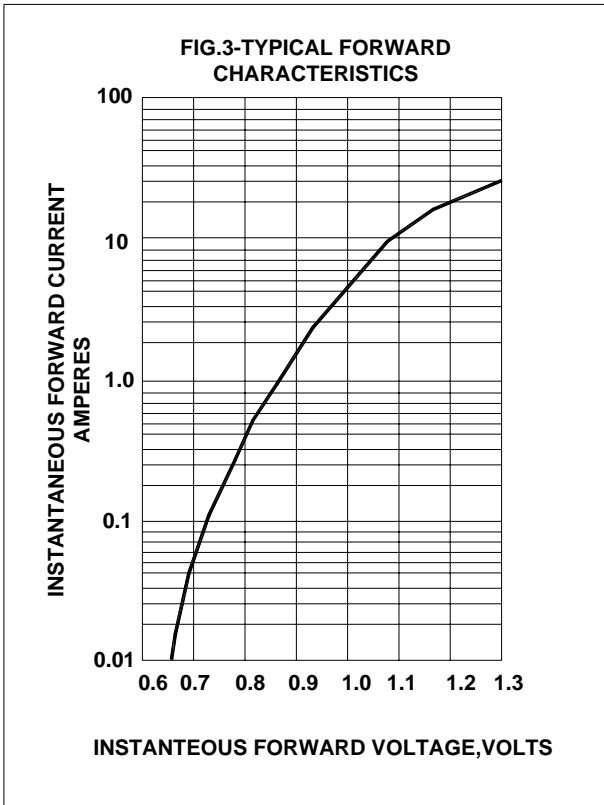
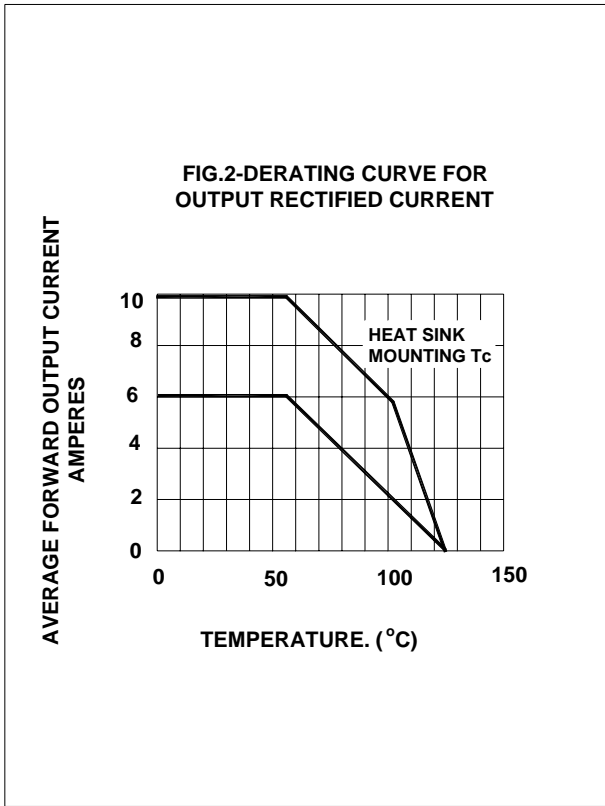
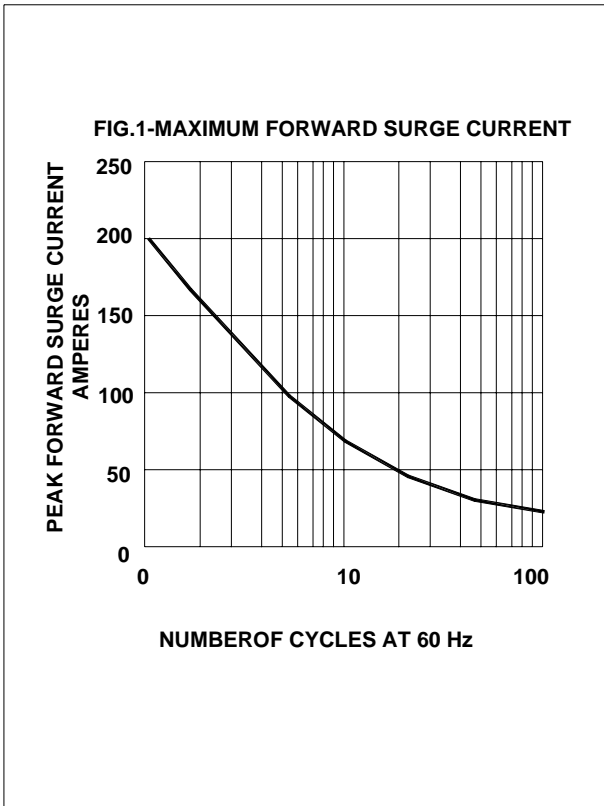
ISO/TS 16949 : 2002  
Certificate No. 05103

ISO 14001:2004  
Certificate No. 7116

ISO 9001:2000  
Certificate No. 0506098

Dated : 11/11/2002

## RATINGS AND CHARACTERISTIC CURVES (BR10 SERIES)



**SEMTECH ELECTRONICS LTD.**

(Subsidiary of Sino-Tech International Holdings Limited, a company listed on the Hong Kong Stock Exchange, Stock Code: 724)



ISO/TS 16949 : 2002  
Certificate No. 05103



ISO 14001:2004  
Certificate No. 7116



ISO 9001:2000  
Certificate No. 0506098