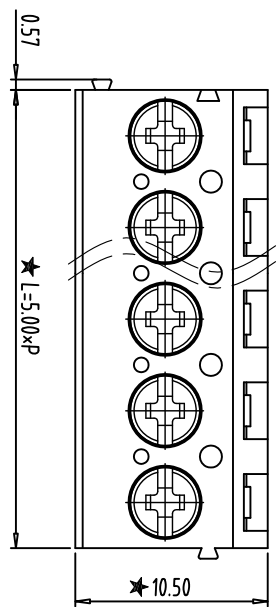
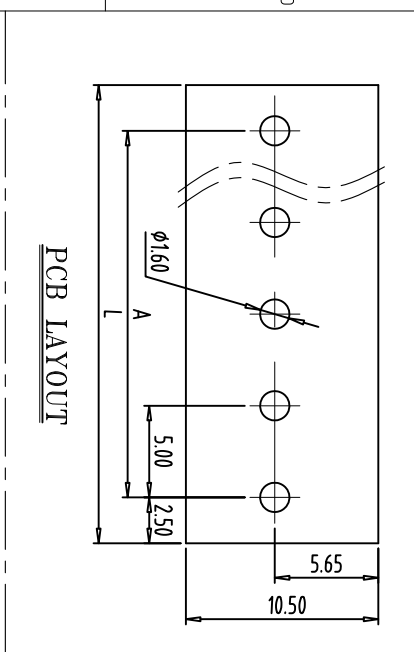
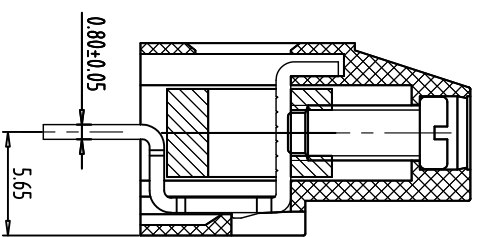
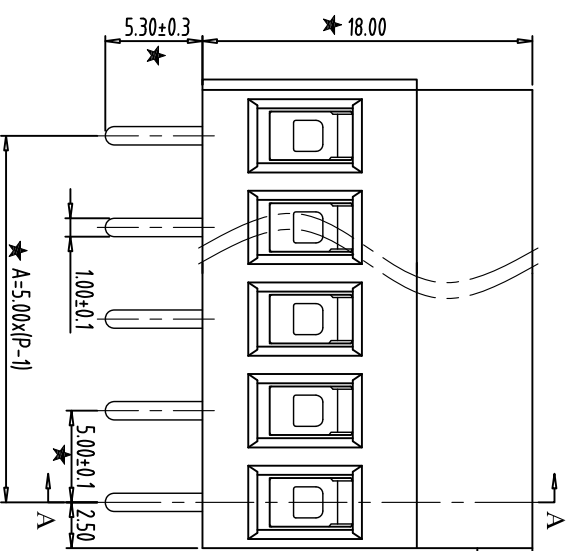
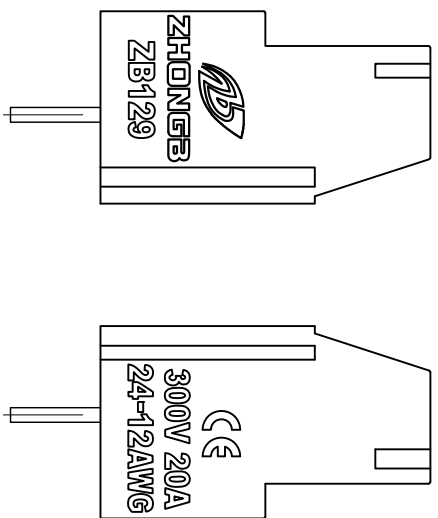


FILE: ZB02/	6	5	4	3	2	1
REV	CONTENT	CHK	DATE			



- NOTES:**
1. Rating: 300V 20A;
 2. Insulation Withstands Voltage: AC2000V/MIN;
 3. Insulation Resistance: 500MΩ or more at DC500V
 4. Using Temperature Range: -40°C/+105°C;
 5. Screw Torque Value: 0.5N.m;
 6. Suitable Electric Wire: 12-24AWG.
 7. "★" is critical dimension to be controlled.



SECTION: A-A

Total Pitch Tolerances		Nominal dimension range																			
In mm		In mm																			
0	30	53	70	90	115	150	250	350	500	0	30	53	70	90	115	150	200	250	0	over	
to	to	to	to	to	to	to	to	to	to	to	to	to	to	to	to	to	to	to	to	to	over
30	53	70	90	115	150	250	350	500	30	53	70	90	115	150	200	250	320	10	0	over	
±0.18	±0.20	±0.25	±0.3	±0.35	±0.44	±0.60	±0.70	±0.85	±0.20	±0.25	±0.30	±0.35	±0.44	±0.55	±0.70	±0.80	±0.90	0.2	0.3	0.3	0.2
																					0.5

ITEM	NAME OF PART	NO. OF PART	Q'TY	MATERIAL	NOTE
DWG	SK	DATE	2014-08-12	A4	SHEET/OF 1/1
CHK		DATE		2.5:1	129直針
APP.		DATE			
NINGBO ZHONGBO PHOTOVOLTAIC TECHNOLOGY CO., LTD			DWGNO.	ZB-02-ZB129VXXPXC	
NINGBO ZHONGBO PHOTOVOLTAIC TECHNOLOGY CO., LTD			NAME	ZB129V-XXP-XC	