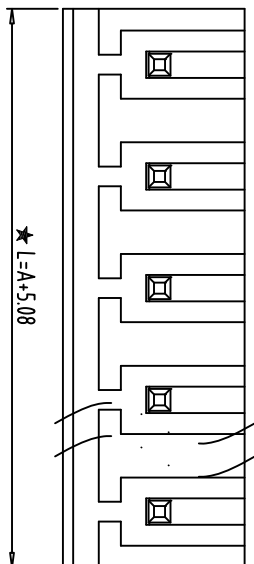
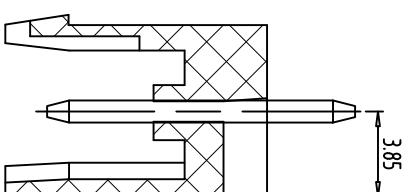
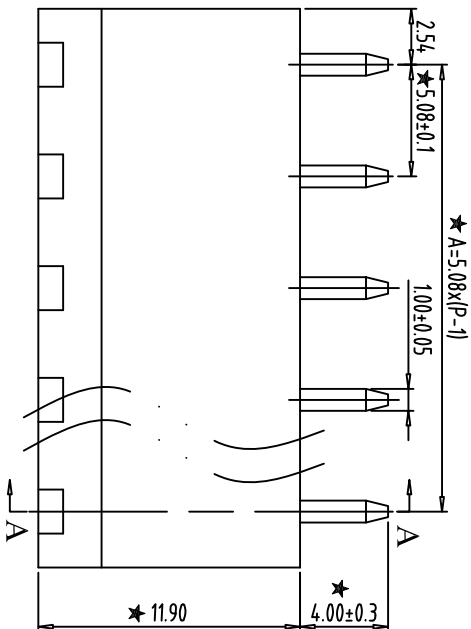
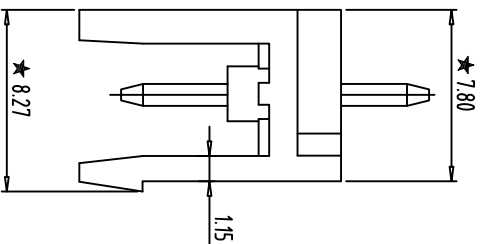


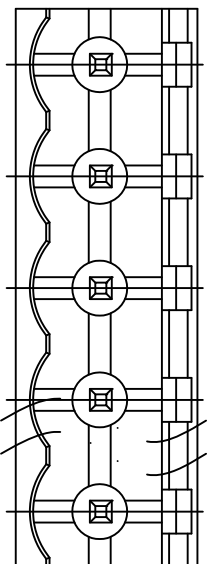
PCB LAYOUT
S=2:1



- NOTES:
1. Rating:300V 15A ;
 2. Insulation Withstands Voltage: AC2000V/MIN
 3. Insulation Resistance: 500MΩ or more at DC500V
 4. Using Temperature Range: -40°C~+105°C
 5. "★" is the important dimension
 6. RoHS compliance



SECTION:A-A



Total Pitch Tolerances		Nominal dimension range																																												
In mm		In mm																																												
0	to	30	to	53	to	70	to	90	to	115	to	150	to	250	to	350	to	500	to	700	to	1000																								
±0.18	to	±0.20	to	±0.25	to	±0.3	to	±0.35	to	±0.44	to	±0.60	to	±0.70	to	±0.85	to	±0.20	to	±0.25	to	±0.30	to	±0.35	to	±0.44	to	±0.55	to	±0.70	to	±0.80	to	±0.90	to	0.2	to	0.3	to	0.3	to	0.2	to	0.3	to	0.5

ITEM	NAME OF PART	NO. OF PART	Q'TY	MATERIAL	NOTE
DWG	SK	DATE	2014/08/19	SIZE	A4
CHK	DATE	SCALE	3:1	UNITS	mm
APP.	DATE	NAME	ZBF400V-XXP-X	SHEET/OF	1/1

NINGBO ZHONGBO PHOTOVOLTAIC TECHNOLOGY CO., LTD		NINGBO ZHONGBO PHOTOVOLTAIC TECHNOLOGY CO., LTD		DWGNO.	
ZB-02-ZBF400VXXPX		ZB-02-ZBF400VXXPX		ZB-02-ZBF400VXXPX	